

HISTORIC-MODELS.COM MODEL BUILDING KITS

Contact Richard McClintock at info@historic-models.com or trainsasachild@gmail.com

Most of these kits have been commissioned by the sites themselves. The mission of this site is to furnish kits to the historic sites at cost, so they can profit from the kit sales, thereby letting us support them in a way we cannot do with ready cash. We do not charge for developing the model. After it is produced, the only cost to the historic property is for printing the kits. The site then gets to keep any difference between cost and sales price.

NOTES

- * Kits commissioned by or for the historic property
- ** Completed but not yet authorized for distribution (pending research source permissions)

*All proceeds from these kits benefit the historic sites.
All these kits are in HO (1:87) scale unless otherwise noted.*



William Aiken House (1730, 1815)
Charleston, South Carolina *
Postcard scale



Appomattox Depot (1870)
Appomattox, Virginia



Arjalon Price House (1733)
Orange, Virginia *



The Arcade (1820)
Madison, Virginia

APPOMATTOX COURT HOUSE NATIONAL HISTORIC PARK
Appomattox, Virginia



Appomattox Village I: McLean House (1848)
plus kitchen, quarters, ice house, and well house *



Appomattox Village II: Courthouse (1846)
and well house *



Appomattox Village III: Clover Hill Tavern (1819)
plus guest house, kitchen, quarters, and privy *



Appomattox Village III: Clover Hill Tavern (1819)
guest house & kitchen *



Appomattox Village IV: Meeks Store (1852),
plus warehouse and Woodson Law Office *



Appomattox Village V: Mariah Wright House
(1836) *



Appomattox Village VI: Charles & Joel Sweeney
cabins (1830) *



Appomattox Village VII:
Peers House (1848) *



Appomattox Village VIII:
Coleman House (1855)
& Kelley House (1850) *



Bacon's Castle (1665)
Surry, Virginia *
A Preservation Virginia Historic Site

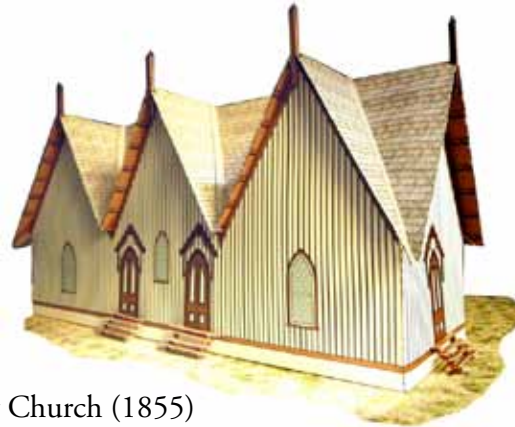


Battersea (1768)
Petersburg, Virginia *



Boatswain Swamp or
Watt House (1835)
Gaines Mill, Virginia

Boston & Maine
Depot (1880)
Maplewood,
New Hampshire



Briery Church (1855)
Prince Edward County, Virginia *



Toney Store

Tobacco Barn

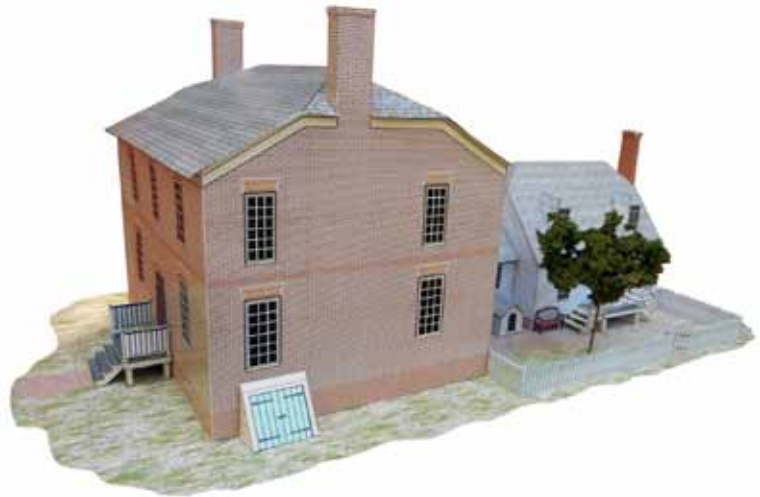
*Slate Quarry Office
Post Office*

Union Grove School

BUCKINGHAM HISTORIC VILLAGE
Buckingham Court House, Virginia *



Cape Henry
Lighthouse (1791)
Virginia Beach,
Virginia *
A Preservation
Virginia Historic Site



Cappahosic House (1751)
Gloucester, Virginia *



Chase City Queen Anne House (1901)
Chase City, Virginia



Carle Park Pavilion (1920)
Urbana, Illinois



Christ Church (1732)
Weems, Virginia



Craik-Patton House (1834)
Charleston, West Virginia *



Mercy Seat School



R. R. Moton School & Tarpaper Shacks

First Baptist Church



Mercy Seat Church



Bethel AME Church



Beneficial Benevolent Society



Log Cabin School

CIVIL RIGHTS IN EDUCATION TRAIL SITES
Prince Edward County, Virginia *
(N scale [1:160]; see also Pleasant Shade, below)



Cumberland Church (1754 & 1920)
Farmville, Virginia *



Isaiah Davenport House (1820)
Savannah, Georgia *



Derby Summerhouse (1793)
Salem, Massachusetts *



Drayton Hall (1736), current form
Charleston, South Carolina *



Drayton Hall (1736), as built
Charleston, South Carolina *



Eppington (1768)
Chesterfield, Virginia *



Eutaw Plantation (1808)
Eutaw County, South Carolina



The Exchange (1840)
Petersburg, Virginia *



Fairfield [originally Rocky Mills] (1750)
Richmond, Virginia *



Farmers Bank (1817)
Petersburg, Virginia *
(Also available in half-size, as a savings bank)



Fireproof Building (Robert Mills, 1827)
Charleston, South Carolina *



Gas Station (ca. 1910)
Mathews County, Virginia



Gas Station, Pure Oil Standard "Cottage" (1920)
Cape Charles, Virginia



Gazebo, Rosedown Plantation (1850)
Saint Francisville, Louisiana *
*(Available both as a regular 1:87 kit
and as a larger table centerpiece)*



Glencoe (1870)
Radford, Virginia*



Grace Church (1834)
Ça Ira, Buckingham County, Virginia *



Gunston Hall (1755-58)
Mason Neck, Virginia *



Château de Gudanes (1753)
Château-Verdun, France *
(European-style postcard model, 1:300)



Hanover Courthouse (1738)
Hanover County, Virginia *



High Bridge (1854), Farmville, Virginia
6-span Starter kit *
(15-span Completer kit available)



Hillsman House (1770)
Saylor's Creek, Virginia *



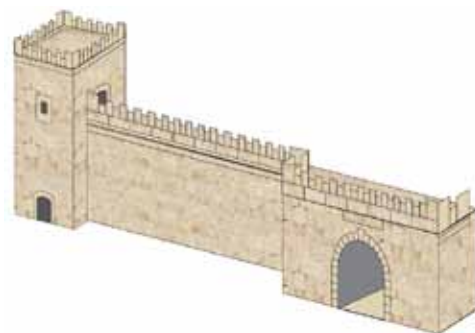
Hooper Mansion (1728, 1745)
Marblehead, Massachusetts



Second Virginia Statehouse (1664),
Jamestown, Virginia
(First and third statehouses also available)
A Preservation Virginia Historic Site



Jaffa Gate (1538)
Jerusalem, Israel *

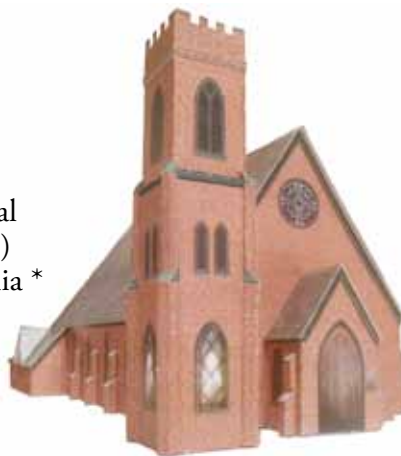


Herodian Walls (1st century AD)
Jerusalem, Israel *



Mazkeret Batya [Rothschild estate] (1884)
Jerusalem, Israel *

Johns Memorial
Church (1881)
Farmville, Virginia *



Lenoir Store (1869)
Horatio, South Carolina



Locust Grove (1794), home of Peter Francisco
Buckingham County, Virginia *



Macfarland-Hubbard house (1835)
Charleston, West Virginia *



Martin Box (1855), Hampden-Sydney, Virginia **
*(Reconstruction based on research by
Professor Mary Prevo, Hampden-Sydney College)*



Mary Washington House (1750)
Fredericksburg, Virginia *



Marshall House (1780)
Richmond, Virginia *
A Preservation Virginia Historic Site



McCormick Observatory
at the University of Virginia (1884)
Charlottesville, Virginia



Mercer's Apothecary and kitchen (1761)
Fredericksburg, Virginia *



Menokin (1769) *as built*
Richmond County, near Warsaw, Virginia *



Menokin (1769) *from original presentation drawings*
Richmond County, near Warsaw, Virginia *



Miller's Cottage (1829)
Hydraulic Mills, near Charlottesville, Virginia

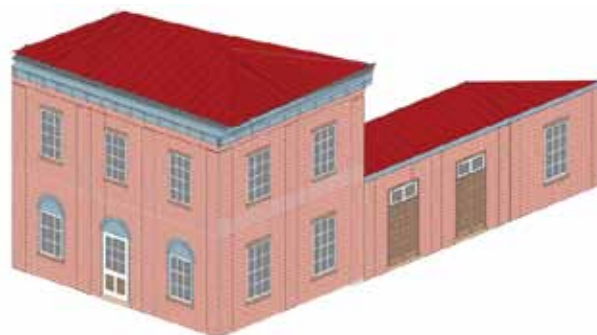


Narbonne House (1669-72)
Salem, Massachusetts *



FRONT FAÇADE (LEFT)
BACK FAÇADE (ABOVE)

Morton's Tavern (1798)
Farmville, Virginia *



Norfolk & Western Passenger depot (1854)
Farmville, Virginia *



Norfolk & Western Passenger Depot (1903),
Farmville, Virginia *
I. Station proper II. Train shed
(Also available in 1:160 and 1:48 scale)



Norfolk & Western (South Side Rail Road)
Freight Depot (1854)
Farmville, Virginia *



Olivet Presbyterian Church (1856)
Providence Forge, Virginia



Plimoth Plantation village (1629)
Plymouth, Massachusetts *



Pleasant Shade (1745, recast 1820), Rice, Virginia,
birthplace of R. R. Moton *
(Kit contains both 1745 and 1820 forms)



Point of Honor (1815)
Lynchburg, Virginia *



Old Courthouse (1846)
Portsmouth, Virginia *



Polegreen Church (1747)
Hanover County, Virginia *



Poplar Forest (1806), Forest, Virginia *
(front elevation)



Poplar Forest (1806), Forest, Virginia *
(rear elevation)



For the historic buildings from Prince Edward Court House, Virginia,
please see below under “Worsham” on page 15. They include the third Courthouse (pictured, 1828),
Clerk’s Office (1852), Debtor’s Prison (1790), Old Stone Jail (1854), and Presbyterian Church (1850).



Prospect Depot (1854)
Prospect, Virginia *



Ranson-Baughan-Ayres House (1805)
Cumberland County, Virginia *



Rising Sun Tavern (1761)
Fredericksburg, Virginia *



Roanoke Plantation, home of John Randolph (1836)
Charlotte County, Virginia *



Rosewell (1730)
Gloucester, Virginia *



Saltillo Depot (1887)
Saltillo, Pennsylvania (East Broad Top RR) *



Sandusky (1808)
Lynchburg, Virginia *



Schwartz's Tavern (1763, 1790, & 1800)
Blackstone, Virginia *



Scotchtown (1720)
Hanover County, Virginia *
A Preservation Virginia Historic Site



Smith's Fort (1763)
Surry County, Virginia *
A Preservation Virginia Historic Site



Smithfield Plantation (1774),
Blacksburg, Virginia *



Smithfield Plantation Outbuildings (1774),
Blacksburg, Virginia *



Spiers House (1862, unbuilt)
Raleigh, North Carolina
(Using J. W. Cosby ink-and-watercolor presentation
drawings in Hampden-Sydney College library) **



St James's House (1768)
Fredericksburg, Virginia *



St John's Church (1772 Form)
Richmond, Virginia *
(The church as Patrick Henry knew it)



St John's Church (Current form, 1880)
Richmond, Virginia *
(Kit includes 1895 Keeper's Cottage)



St Paul's College President's House
(1900)
Lawrenceville, Virginia *



St Paul's College Chapel (1904)
Lawrenceville, Virginia *



St Paul's College Saul Building (1888)
Lawrenceville, Virginia *



Stratford Hall (1732)
Westmoreland County, Virginia *

Sweet Briar
College Bell Tower
Pavilion (1906),
Amherst County,
Virginia *
*(Also available
in 1:48 scale
and as a hanging
ornament kit)*



Thompson House (1894)
700 High Street, Farmville, Virginia *



Virginia Capitol (1785) *
by Thomas Jefferson
(N scale [1:160]; available in HO on request)



Virginia Capitol Square
Bell Tower (1824)
Richmond, Virginia



West Virginia Independence Hall (1855)
Wheeling, West Virginia



Weyanoke Hotel (1926)
Farmville, Virginia *



Wilton (1754)
Richmond, Virginia *

WORSHAM VILLAGE, VIRGINIA
(formerly Prince Edward Court House, 1754-1872)



Debtor's Prison (1787) *



Kinderton House (1824)
& Eleazer Root Academy (1832)



Courthouse (1832) *



Presbyterian Church (1850) *



Old Jail (1854) *



Clerk's Office (1856) *

COMING SOON

Blandfield, Richmond County, Virginia 1760
 Blount Mansion, Knoxville TN 1792
 Brown House, Lontontown MD 1760
 Ellicott City Depot MD 1830
 Ferry Farm, Fredericksburg VA 1738
 Kenmore, Fredericksburg VA 1763
 Lynnewood Hall, Philadelphia, PA 1917

Montpelier, VA 1760 & 1801
 Mount Airy, Warsaw VA 1764
 Mulberry Hill, Staunton River VA 1798
 Ste-Mère-Église, Normandy, France 11th century
 Thoroughgood House, Virginia Beach VA 1640
 Touro Synagogue, Newport RI 1763
 Violet Bank, Colonial Heights VA 1804

FANTASY OR TOY KITS



Charles-Addams-style house



*Point of Honor
Tower Folly*



*House of Joy
windmill*



Three Ornamental Steeples



Gunston Porch gazebo



Gothick blocks



Rosewell Blocks

FANTASY BUILDING BLOCKS
 Modular blocks featuring various building materials
 and architectural styles to mix or match

HAMPDEN-SYDNEY COLLEGE CAMPUS BUILDINGS
(SCALE 1:160, POSTCARD SIZE)



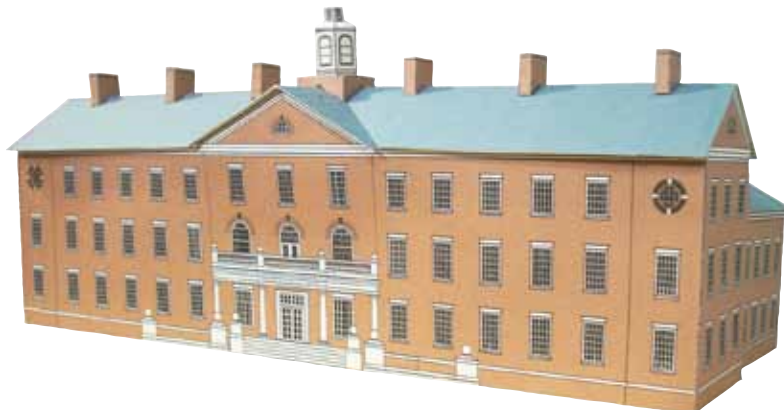
Old College (1776)



New College, now Cushing Hall (1823-1830)



Union Theological Seminary,
now Venable Hall (1824-1829)



Bortz Library (2007)



Johns Auditorium (1951)



Watkins Bell Tower (1934)
HO scale (1:87), 1:48 scale, miniature



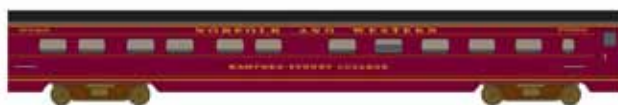
Carpenter Hall (1997)



Whitehouse
Hall (1967)



Everett Stadium (2007)



N&W Pullman Car "Hampden-Sydney College" (1946)
(Note: Cardstock kit, not a running model)